

### 霜剑纹夜蛾 *Acronicta pruinosa* (Guenée) (图版 II-31)

*Acronycta pruinosa* Guenée, 1852, in Boisduval et Guenée, Hist. nat. Ins. Lep. p. 53. (爪哇)

*Acronicta pruinosa*: Warren, 1909, in Seitz, Macrolep. World 3: 15, pl. 3a. —Chen et al., 1991, Noct. Fn. Xizang p.45.

*Acronicta consanguis*: Chen, 1982, Icon. Het. Sin. 3: 242, pl. 77, fig. 1765.

翅展 33—43mm。头、胸及前翅灰白微带黑褐色，前翅基线、内线、外线均双线黑色，基剑纹与端剑纹黑色，环、肾纹较贴近，前者灰色，后者暗褐色，均黑边，亚端线白色；后翅白色带黄褐，外线褐色；腹部黑褐色。雄蛾抱钩长棘形，远伸出瓣背缘，阳茎有针毛形角状器（图 37）。

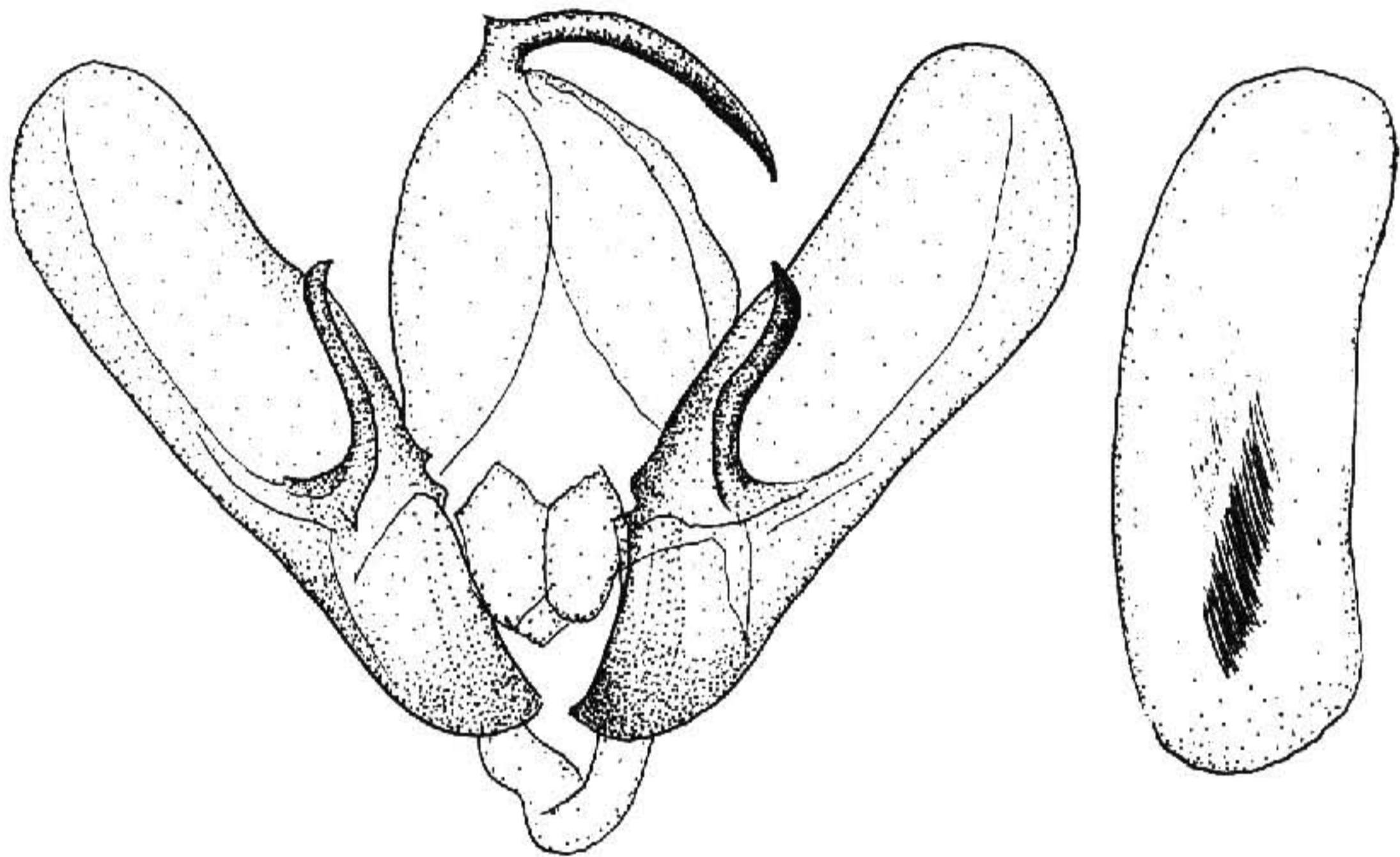


图 37 霜剑纹夜蛾 *Acronicta pruinosa* Guenée ♂ 外生殖器

**寄主** 宽叶胡颓子。

**分布** 黑龙江、江苏、湖北、西藏；日本，锡金，印度等。

### 缀白剑纹夜蛾 *Acronicta niveosparsa* (Matsumura) (图版 II-32)

*Acronycta niveosparsa* Matsumura, 1926, Ins. Mats. 1: 3, pl. 1, fig. 8. (日本)

*Acronycta niveosparsa*: Draudt, 1931, in Seitz, Macrolep. World 3 Suppl. p. 9, pl. 1d. —

Draudt, 1950, Mitt. munch. ent. Ges. 40: 1.

*Craniophora niveosparsa*: Kozhantschikov, 1950, Fn. SSSR, 12: 541, fig. 281.

*Apatele niveosparsa*: Ogata, 1958, in Esaki, Icon. Het. jap. p. 62, pl. 84, fig. 1851.

*Narcotia niveosparsa*: Sugi, 1982, in Inoue, Moths Jap. 1: 682, pl. 167, fig. 26, pl. 358, fig. 12.